

DOOR STYLES & COLOR CATEGORIES

SAGINAW



- Raised Center Panel Door
- Solid Wood Drawer Front
- Standard Overlay
- All Maple Face Frames & Doors
- Wood Dovetailed Drawer
- Side-Mount Epoxy Glides
- Veneer Center Panel

DARTMOUTH



- Flat Panel Shaker Door
- Solid Wood Drawer Front
- Full Overlay
- All Maple Face Frames & Doors
- Wood Dovetailed Drawer
- Soft-Close Door/Drawer
- Full-Extension, Undermount Glides
- MDF Center Panel on white/Veneer Center Panel on stains

CIRCA



- Slab Door and Drawer Front
- Full Overlay
- All Maple Face Frames
- 5/8" Particleboard Door with Maple Veneer & Maple Veneer-banded edges
- Wood Dovetailed Drawer
- Soft-Close Door/Drawer
- Full-Extension, Undermount Glides
- Door Grain Direction: Vertical
- Drawer Grain Direction: Horizontal
- Truckload Only

YORK



- Flat Panel Door
- 5-Piece Flat Panel Drawer Front
- Full Overlay
- All Maple Face Frames & Doors
- Wood Dovetailed Drawer
- Soft-Close Door/Drawer
- Full-Extension, Undermount Glides
- MDF Center Panel

HUDSON



- Pillow, Mitered Door with Raised Center Panel
- 5-Piece Flat Panel Drawer Front
- Full Overlay
- All Maple Face Frames & Doors
- Wood Dovetailed Drawer
- Soft-Close Door/Drawer
- Full-Extension, Undermount Glides
- Solid Wood Center Panel

Only items shown in SHADED area are available Kitchen-at-a-Time. All others are special order!

	Color Category	Saginaw	Dartmouth	Circa	York	Hudson
Honey	1	In Stock KAT	In Stock KAT	Special Order TL	Special Order TL	Special Order TL
Dark Sable	1	In Stock KAT	In Stock KAT	Special Order TL	Special Order TL	Special Order TL
Crimson	1	In Stock KAT	In Stock KAT	Special Order TL	Special Order TL	Special Order TL
Chestnut	1	In Stock KAT	Special Order TL	Special Order TL	Special Order TL	Special Order TL
Crimson w/ Choc Glaze	1	N/A	N/A	N/A	N/A	In Stock KAT
Grey	1	Special Order TL	In Stock KAT	Special Order TL	Special Order TL	Special Order TL
Heritage Brown w/ Choc Glaze	1	N/A	N/A	N/A	N/A	In Stock KAT
Heritage Brown (no glaze)	1	Special Order TL	Special Order TL	Special Order TL	Special Order TL	Special Order TL
White Paint	2	Special Order TL	In Stock KAT	N/A	In Stock KAT	Special Order TL
Antique White Paint	2	Special Order TL	Special Order TL	N/A	Special Order TL	In Stock KAT
Cinnamon	3	Special Order TL	Special Order TL	Special Order TL	Special Order TL	Special Order TL
Auburn	3	Special Order TL	Special Order TL	Special Order TL	Special Order TL	Special Order TL
Royal	3	Special Order TL	Special Order TL	Special Order TL	Special Order TL	Special Order TL
Onyx	3	Special Order TL	Special Order TL	Special Order TL	Special Order TL	Special Order TL
Natural	3	Special Order TL	Special Order TL	Special Order TL	Special Order TL	Special Order TL
Competitive Color Match	4	Special Order TL	Special Order TL	Special Order TL	Special Order TL	Special Order TL

Category 1 & 2 = Standard Wolf Colors Category 3 & 4 = Special Order Colors

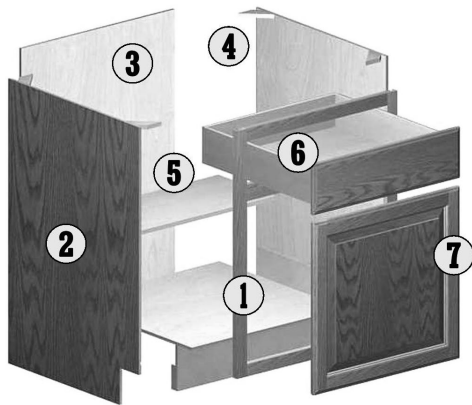
WOOD CHARACTERISTICS & VARIATIONS

Naturally occurring wood characteristics such as variations in color, grain, mineral streaks and knots are not considered defects.

Color variations are a natural occurrence due to species, age, character of cabinets, and exposure to UV light and sunlight. Such variations and changes are not considered defects. For these reasons, new and/or replacement cabinets may not match display samples and/or existing cabinets.

Warping is the bending or twisting of a part. To measure a door or shelf, lay the product on a flat surface and measure the gap from the surface to the part. The standard allowable tolerance for wood is $\frac{1}{8}$ " per lineal foot. Materials that fall within specification are considered acceptable, as a part of the natural characteristics of wood.

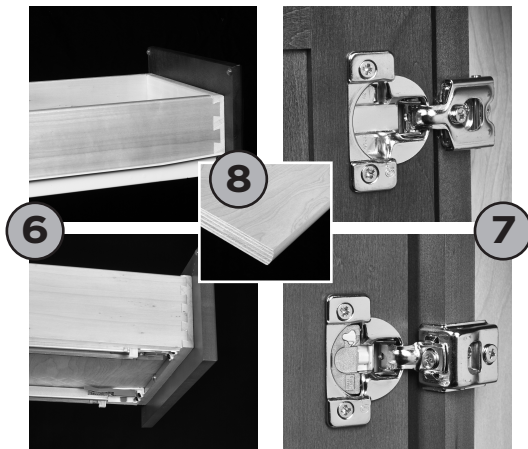
STANDARD CABINET SPECIFICATIONS



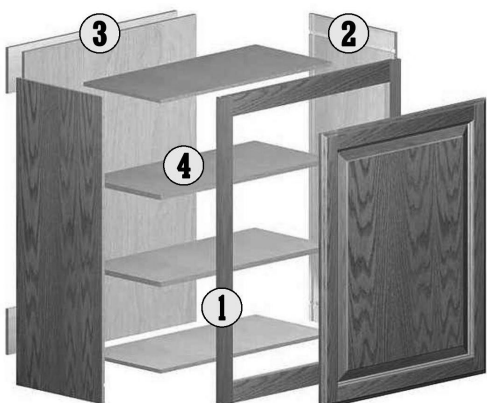
BASE CABINETS

- 1 Cabinet fronts are made from $\frac{3}{4}$ " solid maple wood. Rails are pocket drilled and assembled with 1 $\frac{1}{4}$ " screws for rugged durability.
- 2 Side panels and bottom – $\frac{1}{2}$ " plywood with matching exterior laminate – glued and stapled in a $\frac{1}{2}$ " dado in the cabinet's front frame.
- 3 Back panels – made from vinyl-covered (inside only) $\frac{1}{2}$ " plywood – are glued and nailed in a $\frac{1}{2}$ " dado and stapled to the hang rail and cabinet bottom.
- 4 All-wood $\frac{3}{4}$ " corner blocks are installed on all corners.
- 5 Half-depth adjustable shelf of $\frac{3}{4}$ " plywood with bull-nosed, foil-covered front edges. The shelves are held in place with self-locking $\frac{1}{4}$ " diameter clips on the sides.

FINISH, DRAWERS & HINGES



- Clear finishes use a catalyzed varnish, and paint finishes use a post-catalyzed lacquer. Our finish is resistant to household chemicals, water, food stains and mild acids.
- 6 All drawers are constructed using $\frac{5}{8}$ " clear finished solid wood with dovetail construction. Drawer bottom is $\frac{1}{4}$ " plywood in a dado into drawer sides. All drawers (including Pull Outs) are rated for 75 lbs.
Saginaw: Side-mount, standard epoxy GRASS glides
Dartmouth, Hudson & York: Full-extension, undermount GRASS glides with soft-close
- 7 Saginaw: Hidden, six-way adjustable GRASS hinge
Dartmouth, Hudson & York: Hidden, six-way adjustable GRASS hinge with integrated soft-close mechanism
All cabinets that require handing are handed left (hinge is on the left when looking at the cabinet). Wall cabinets can simply be flipped over to change hinging. For base cabinets, remove and flip door, then screw to other side.
- 8 Adjustable $\frac{3}{4}$ " plywood shelf with bull-nosed, foil-covered front edges. The shelves are held in place with self-locking $\frac{1}{4}$ " diameter clips on the sides.



WALL CABINETS

- 1 Cabinet fronts are made from $\frac{3}{4}$ " solid wood. Rails are pocket drilled and assembled with 1 $\frac{1}{4}$ " screws for rugged durability.
- 2 Side panels and bottom – $\frac{1}{2}$ " plywood with matching exterior laminate – glued and stapled in a $\frac{1}{2}$ " dado in the cabinet's front frame.
- 3 Back panels – made from vinyl-covered (inside only) $\frac{1}{2}$ " plywood – are glued and nailed in a $\frac{1}{2}$ " dado and stapled to the cabinet tops and bottom. Plywood hanging rails are installed at both the top and bottom of the cabinet.
- 4 Adjustable $\frac{3}{4}$ " plywood shelf with bull-nosed, foil-covered front edges. The shelves are held in place with self-locking $\frac{1}{4}$ " diameter clips on the sides.

NOMENCLATURE

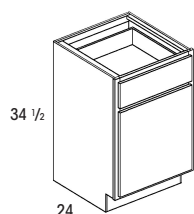
B = Base	MDENTIL = Dentil Moulding	U = Utility
BC = Base Corner	MICW = Inside Corner	V = Valance
BEC = Base End Cabinet	MLR = Light Rail	VB = Vanity Base
BER = Base Easy Reach	MOCW = Outside Corner	VBL = Vanity Base Left Combo Unit
BFOOT = Bun Foot	MQR = Quarter Round	VBR = Vanity Base Right Combo Unit
BMW = Base Microwave Cabinet	MROPE = Rope Moulding	VDB = Vanity Drawer Base
BOXHOOD = Box Hood Starter Unit	MSW = Scribe	VDT = Vanity Drawer Tray
BP = Beaded Panel	MWC = Microwave Cabinet	VP = Veneer Panel
BWB = Base Waste Basket	OC = Oven Cabinet	VSDB = Vanity Sink Drawer Base
BSKIN = Base Skin	ORG = Organizer	W = Wall
BSPICE = Base Spice Pull Out (no filler)	P = Panel	WC = Wall Corner
CCROWN = Cove Crown	POS = Pull-Out Shelf	WDC = Wall Diagonal Cabinet
CORBEL = Corbel	PR = Plate Rack	WEC = Wall End Cabinet
DB = Drawer Base	REF = Refrigerator Panel	WF = Wall Filler
DD = Double Door	REVCROWN = Reversible Crown	WMC = Wall Medicine Cabinet
DEP = Decorative End Panel	ROS = Rosette	WMD = Wall Mullion Door (Door prepped for Glass)
DWEP = Decorative Wall End Panel	RW = Refrigerator Wall	WMDC = Wall Mullion Diagonal Cabinet (Door prepped for Glass)
DWP = Dishwasher End Panel	SB = Sink Base	WSPICE = Base Spice Pull Out (no filler)
F = Filler	SCB = Sink Corner Base	WR = Wine Rack
FB = Furniture Base	SCBFF = Sink Corner Base w/ Front & Floor	WSKIN = Wall Skin
FF = Fluted Filler	SLGCROWN = Large Crown for Full Overlay	
FWF = Fluted Wall Filler	SMCROWN = Small Crown	
LEG = Leg	SS = Super Lazy Susan	
LGCROWN = Large Crown	SSMCROWN = Small Crown for Full Overlay	B12 = Base 12" Wide
LS = Lazy Susan	STCROWN = 2-Pc. Starter Crown	W3030 = Wall 30" Wide, 30" High
MBAT = Batten	TFOOT = Tapered Foot	

FINISH PROCESS

1. All surfaces are machine-sanded.
2. Dust particles are removed before entering each spray machine.
3. Product enters an automated finish system where solvent-based pigment stain is applied.
4. Product is sealed and put through a pre-cure drying process.
5. Complete cure is done with slow bake process.
6. All edges of parts are hand-sanded before being put in a brush-sanding machine.
7. Final topcoat is applied and put through a pre-cure process followed by slow bake for final, thorough curing.
8. Clear finishes use a catalyzed varnish, and paint finishes use a post-catalyzed lacquer.
9. Products are inspected for defects, cleanliness and smoothness.
10. The front side of the products gets a stain coat, a sealer coat and final top coat. The backs of drawer fronts and doors get a stain coat and a sealer coat.

BASE CABINETS

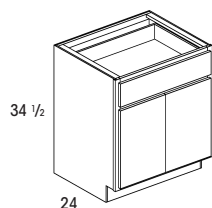
SINGLE-DOOR BASE CABINET



	Cubes
B09*	5
B12	6
B15	8
B18	9
B21	11

- 24" deep
- Single door
- 1 drawer EXCEPT B09
- *B09 has full height door and no drawer and no shelf or shelf holes
- *B09 in Hudson & Saginaw only – center panel is recessed due to size limitations

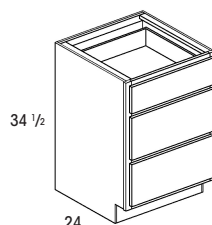
DOUBLE-DOOR BASE CABINET



	Cubes
B24DD	12
B27	13
B30	15
B33	16
B36	18
B42*	21

- 24" deep
- Double doors
- 1 drawer
- Butt doors EXCEPT B42
- *B42 has two drawers and a stationary exposed stile between doors.

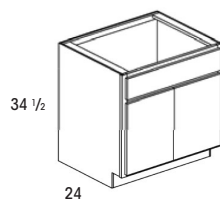
DRAWER BASE CABINET



	Cubes
DB12	6
DB15	8
DB18	9
DB21	11
DB24	12
DB30	15
DB36	18

- 24" deep
- 3 drawers
- Hudson comes with recessed panel top drawer and raised panel bottom drawers

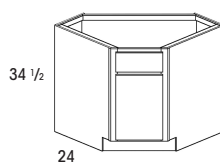
SINK BASE CABINET



	Cubes
SB24DD	12
SB27	13
SB30	15
SB33	16
SB36	18
SB39*	19
SB42*	21

- 24" deep
- Double doors
- 1 false drawer front
- *SB39 and SB42 have stationary exposed stile between doors and two false fronts. SB39 and SB42 do NOT have butt doors.

CORNER SINK BASE CABINET



	Cubes
SCB36	26
SCB36FF	1

- 24" deep
- Single door
- SCB: full cabinet
- SCBFF: face frame and floor only