

Accessories



affresh® Washer Cleaner (W10135699)

Effectively remove odor-causing residue in all washers. Keeps your machine fresher and cleaner when used monthly. Contains 3 pucks.



Front Load Stack Kits (W10298318RP)

Install a 7.5 cu. ft. front load dryer on top of its matching washer with this stack kit. Retail polybag over pack of 12.



Precision Dispense HE Detergent Dispenser (W10250743A)

Adds the right amount of detergent at the right time during the cycle. Extra dispenser provides flexibility in changing detergent.



Compact Model Stack Stand (49971)

Install compact dryer model LER3622P or LDR3822P on top of the LCE4332P compact washer model with this stack stand.



Washable Delicates Bag (W10180464RP)

Protect delicate items from snags, tangles and tears while machine washing and drying. 15-1/2" (L) x 16-1/2" (W).



Dryer Lint Brush (8212614)

Extend dryer life, lower utility bills and reduce drying time by regularly and thoroughly removing lint with this cleaning brush. For lint screen on top. Size 40" (L) x 2" (W) x 2" (D).



Laundry 1-2-3™ Adjustable Clothes Rack (XHS1000XX)

Hang garments straight from the washer or dryer with this clothes rack. It's also collapsible for quick, easy storage.



Top Load Washer/Dryer Cover (W10214580RP)

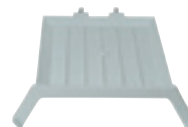
Protect your top load washer or dryer from environmental damage with this gray cover. The cover also cleans easily with a damp cloth.



Industrial-Grade Washer Hoses 8212638RP: (2) 6' Nylon Braided w/90° elbow

8212487RP: (2) 5' Nylon Braided
8212545RP: (2) 5' Red & Blue EPDM
8212656RP: (2) 10' Black EPDM
8212546RP: (2) 4' Black EPDM
8212641RP: (2) 5' Black EPDM

Industrial strength hoses safely and efficiently transport hot and cold water to the washer.



Dryer Racks

Models 70HEB, 71HEB, 80HEB, 86HEB, 88HEA, 94HEA, 96HEA: W10322470A

Models 8000B, 8100B, 8500B and 8900B: 8577312A

Models 5500B and 5800B: 8212450A
Models 4800B and 4850B: 3406839

The dryer rack is convenient for flat items such as sweaters and hats, or for bulky items like footwear and stuffed animals. A quick and easy insertion of this lightweight rack means tumble-free drying.



Steam Dryer Hose kit Models 86HEB, 88HEA, 94HEA, 96HEA: W10473735

This dryer hose kit is especially made for steam dryers and includes (1) 5' hook-up hose, (1) 2' hook-up hose and O-rings.

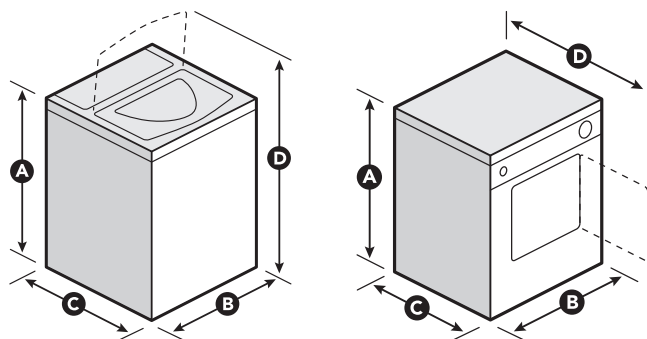
To acquire pricing information, order Whirlpool® laundry accessories and determine delivery time, visit whirlpool.com/accessories or call 1-800-462-3819.

Compact Laundry Pairs

SPECIFICATIONS AND DIMENSIONS

WHIRLPOOL®	
WASHER MODEL	LCE4332P
Washer capacity (cu. ft.)	2.1
Washer configuration	Top load
Lighted cycle indicators	•
Wash basket	Stainless steel
WASH SYSTEM	
Gentle wash system	•
Additive dispensers	Detergent, bleach, fabric softener
Wash speeds	3
Selectable water levels	2
Straight vane agitator	•
Total number of temperatures	3
CYCLES AND OPTIONS	
Total number of cycles	4
Heavy Duty cycle	•
Quick Wash cycle	•
Delicate cycle	•
DIMENSIONS AND COLORS	
Max height (A)	35"
Width (B)	22½"
Depth (C)	24"
Height with door open (D)	49¼"
Available colors	Q

DRYER MODEL	LER3622P	LDR3822P
Capacity (cu. ft.)	3.4	3.4
Drum material	DuraWhite™	DuraWhite™
End-of-cycle signal	•	•
Side-swing door	•	•
Designed, engineered and assembled in the U.S.A.	•	•
DRYING SYSTEM		
AccuDry™ sensor drying system		♦
Gentle heat system	•	•
Total number of temperatures	2	2
Power source	240 Volt	120 Volt
CYCLES AND OPTIONS		
Total number of cycles	3	3
ACCESSORIES		
Dryer rack	N/A	N/A
Compact Dryer Stand kit	49971	49971
4', 3-wire, 30 amp dryer cord	PT220L	PT220L
4', 4-wire, 30 amp dryer cord	PT400L	PT400L
6', 3-wire, 30 amp dryer cord	PT500L	PT500L
6', 4-wire, 30 amp dryer cord	PT600L	PT600L
DIMENSIONS AND COLORS		
Max height (A)	31"	31"
Width (B)	23⅞"	24"
Depth (C)	21⅝"	21⅝"
Depth with door open (D)	37⅜"	37⅜"
Available colors	Q	Q



DIMENSIONS ARE SHOWN FOR PLANNING PURPOSES ONLY.
For complete information, see Installation Instructions packed with product.